



1

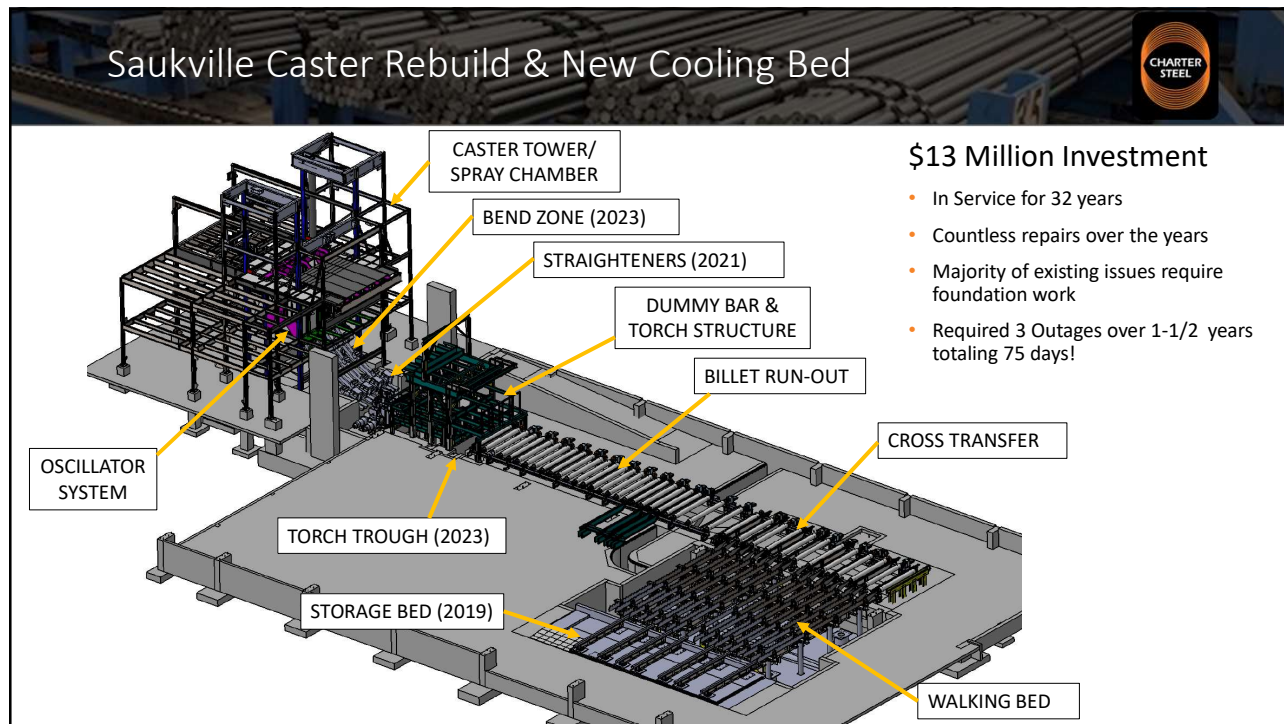
Charter Steel Recent CAPEX Overview

- Charter Steel Saukville
 - Solar Field
- Saukville Melt
 - Caster Rebuild & Cooling Bed
- Saukville Roll
 - Contact Cooling Water System Upgrade
- Saukville Processing
 - Pickle Line 3 New Scrubbers
- Saukville/Fostoria Processing
 - Draw Expansion
- Cleveland Rolling
 - SBQ Upgrades

New SBQ Processing Black Bar Line Facility

Company Confidential

2

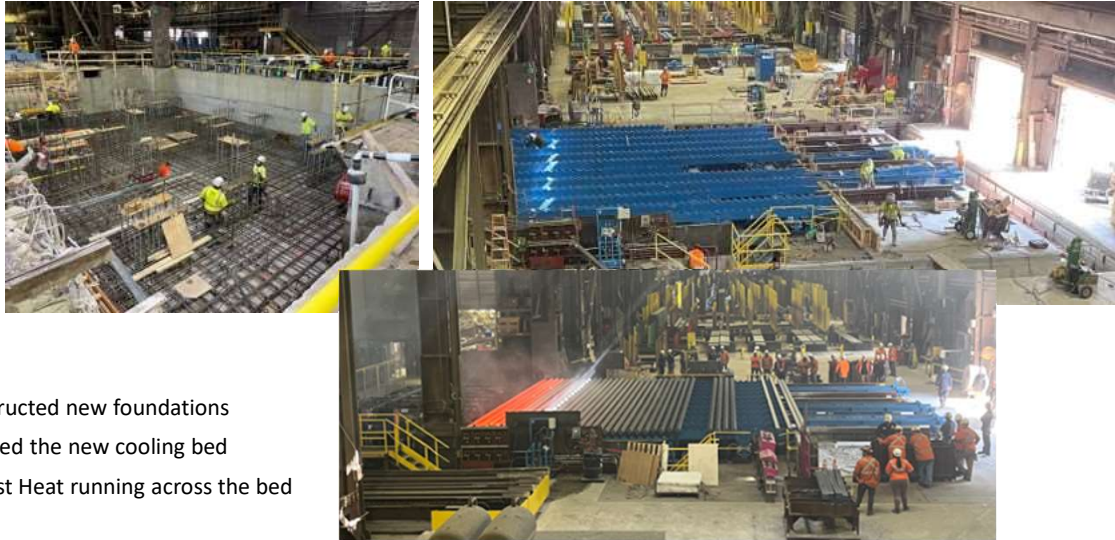


5



6

Saukville Caster Rebuild & New Cooling Bed



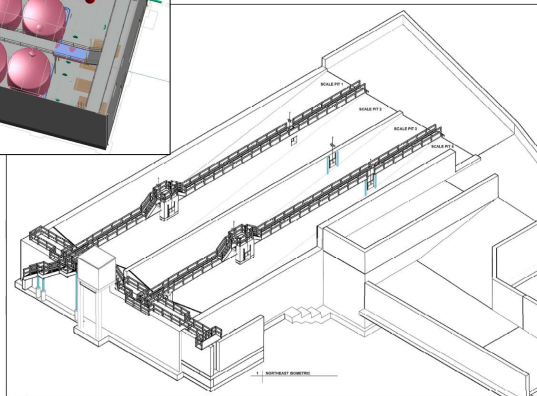
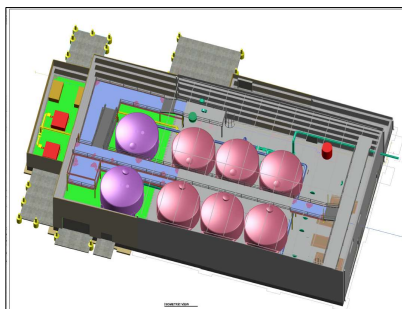
- Constructed new foundations
- Installed the new cooling bed
- The 1st Heat running across the bed

Company Confidential

7

7

Saukville Roll - Contact Cooling Water Upgrades



\$16 Million Investment

- In Service for 30 years handling all of the contact cooling water for the rolling mill. (Rolls, Stands & Water Boxes)
- Running at 50% over design capacity.
- Design and Build new settling pits that can be cleaned by a frontend loader.
- Convert existing clarifier pits to hot well for added oil skimming.
- Add 2 new Tetra pressure filters in a new building addition.
- Improve water quality and maintenance costs throughout the mill.

Company Confidential

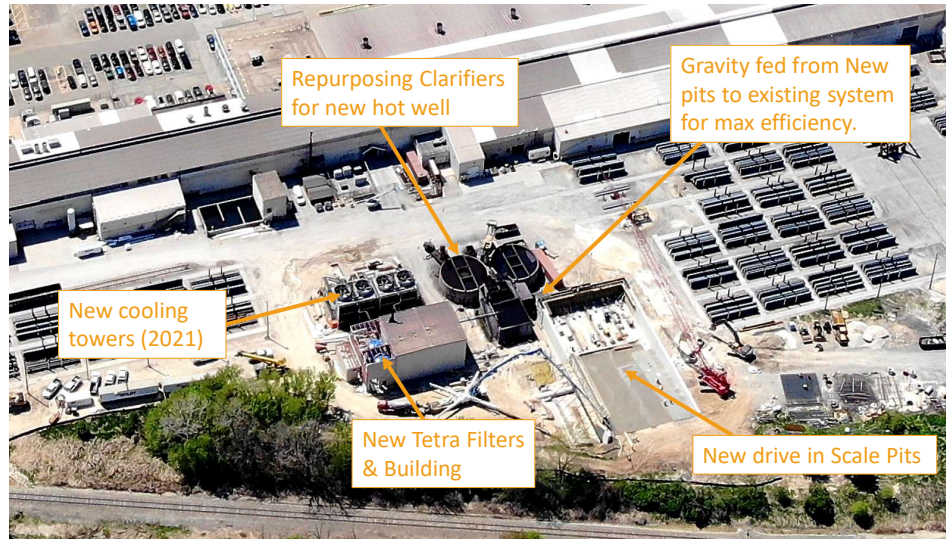
8

8

Saukville Roll - Contact Cooling Water Upgrades



- Construction is underway
- Tie-in & Commissioning complete in Nov this year



Company Confidential

9

9

Saukville Processing – Pickle Line 3 New Scrubbers



\$12 Million Investment

- Two scrubber system at end of service life.
- Replacing it with a 3 scrubber system in a new building.
- Improved air flow and scrubbing with just 2 units, with the 3rd being an in line spare.
- Improves maintainability and reduces line downtime for both P2 & P3.
- Improves Safety on both P2 & P3 as the 3rd unit can cover both lines in case of a maintenance issue.

Company Confidential

10

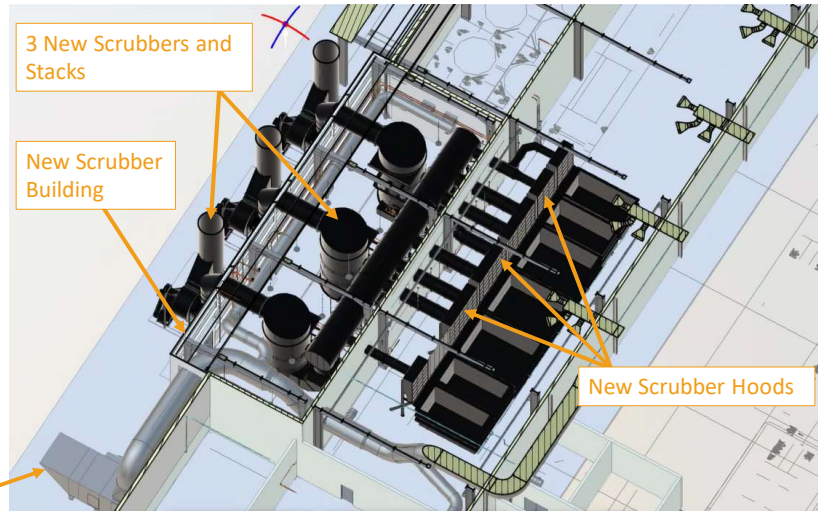
10

Saukville Processing – Pickle Line 3 New Scrubbers



Outage work required:

- Remove old MAUs from roof
- Remove roof & Demo old hoods
- Remove old Scrubbers
- Install new hoods and ducting
- Install new Scrubbers & MAUs
- Install new roof
- Commission and Startup
- Install new Scrubber Building



New Make Up Air
units for better air
balance and flow

Company Confidential

11

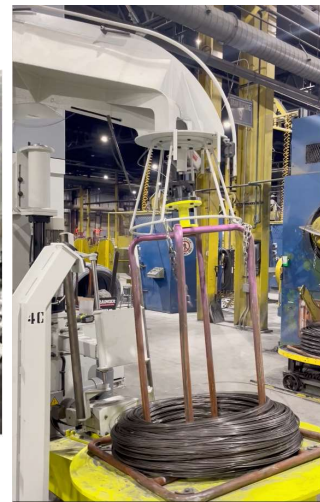
11

Saukville / Fostoria Processing – Expand Draw Capacity



\$22 Million Investment

- 2 Multihole & 2 Bullblock machines for FOS
- 1 Multihole machine for SKV
- Reduce current lead times
- Meet current customer capacity needs by relieving the bottle neck in our process



Company Confidential

12

12

Processing - New Multi-Hole (XS/S Wire) Machines



- 2 in FOS & 1 in SKV
- 5 draw capability (4 blocks and a deadblock, like Draw 11)
- Installed and running production



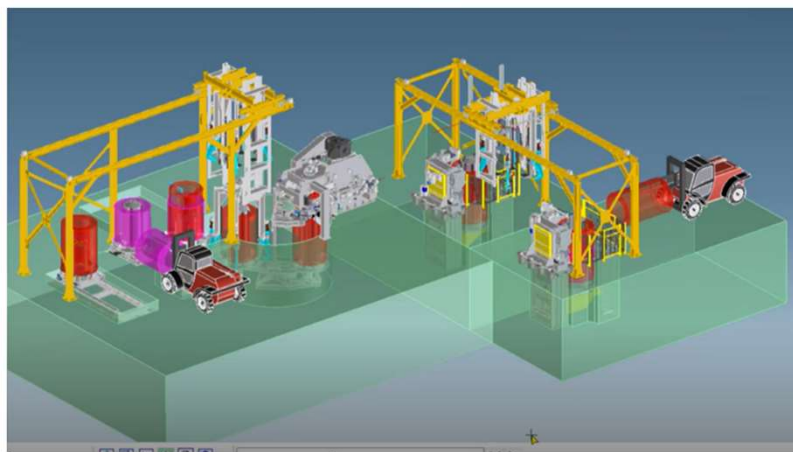
Company Confidential

13

Processing - New Bull Block (Mid1/Mid2 Wire) Machines




- 2 in FOS
- New Equipment for automated packaging, crane movements, and pointing
- Currently in Fabrication with delivery in Nov 2025



Company Confidential



14

Cleveland Rolling – SBQ Line Upgrades



\$3 Million - Multi-Upgrade Project focused on:

- Bar Quality
- Line Uptime and Maintenance
- Bundle Quality

Company Confidential

15

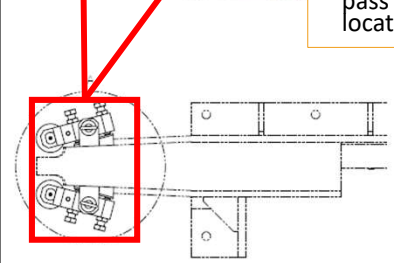
Cleveland Rolling – SBQ Bar Quality







• Vertical & Horizontal rollers added to the pass line at various locations



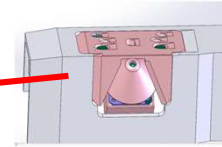
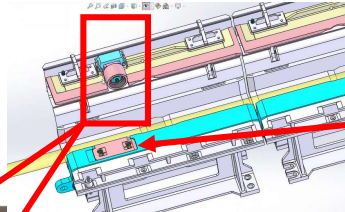
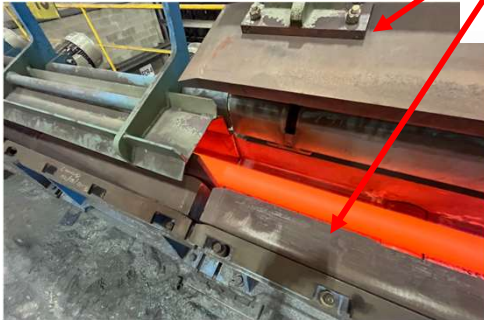

Company Confidential

16

Cleveland Rolling – SBQ Bar Quality



- Vertical rollers added to the cooling runout.
- Vertical & Horizontal rollers added to the cooling bed entry channel



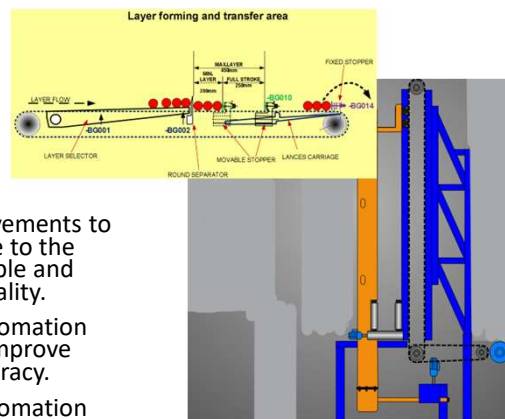
Company Confidential

17

Cleveland Rolling – SBQ Automation & Bundle Quality



Sub-Layer Mode



- Automation improvements to use Sub-layer mode to the fullest extent possible and improve bundle quality.
- Equipment and automation improvements to improve bundle weight accuracy.
- Equipment and automation improvements to improve bundle telescoping.

Full Layer Mode



Company Confidential

18

